

Your Logo

Belgium Street, Bamford

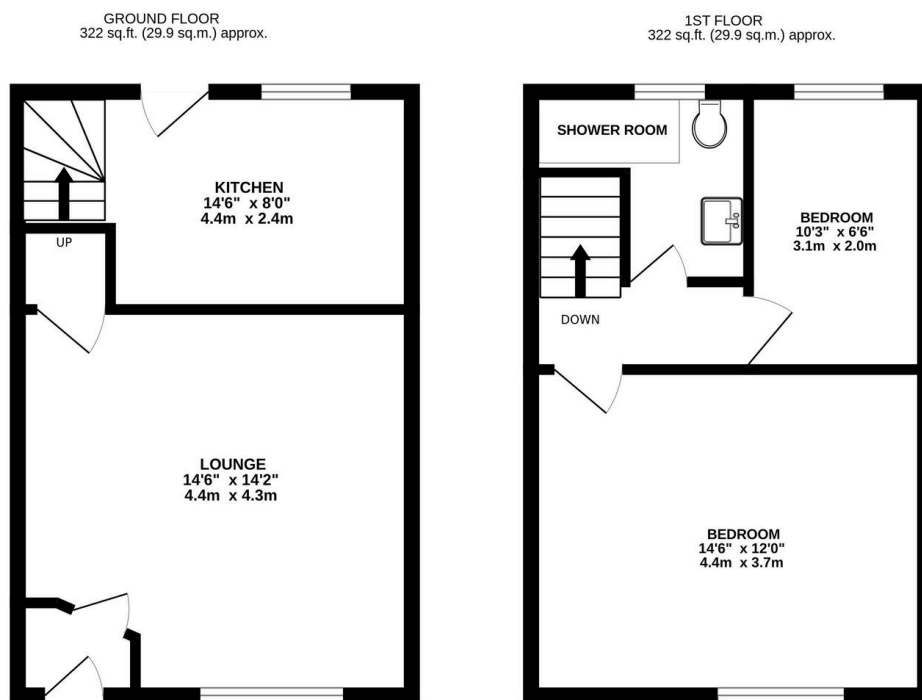
£170,000

2 1 1



Your Logo

- Property reference 958407
- Highly sought after Bamford location
- Front and rear courtyard gardens
- Gas central heated and double glazed throughout
-
- Traditional mid terraced house
- Well maintained throughout
- Would suit first time buyers and small families
-
-



TOTAL FLOOR AREA : 644 sq.ft. (59.8 sq.m.) approx.

Whilst every attempt has been made to ensure the accuracy of the floorplan contained here, measurements of doors, windows, rooms and any other items are approximate and no responsibility is taken for any error, omission or mis-statement. This plan is for illustrative purposes only and should be used as such by any prospective purchaser. The services, systems and appliances shown have not been tested and no guarantee as to their operability or efficiency can be given.
Made with Metropix 6/2024

FOR SALE: Charming Garden Fronted Terrace in the highly sought after district of Bamford.